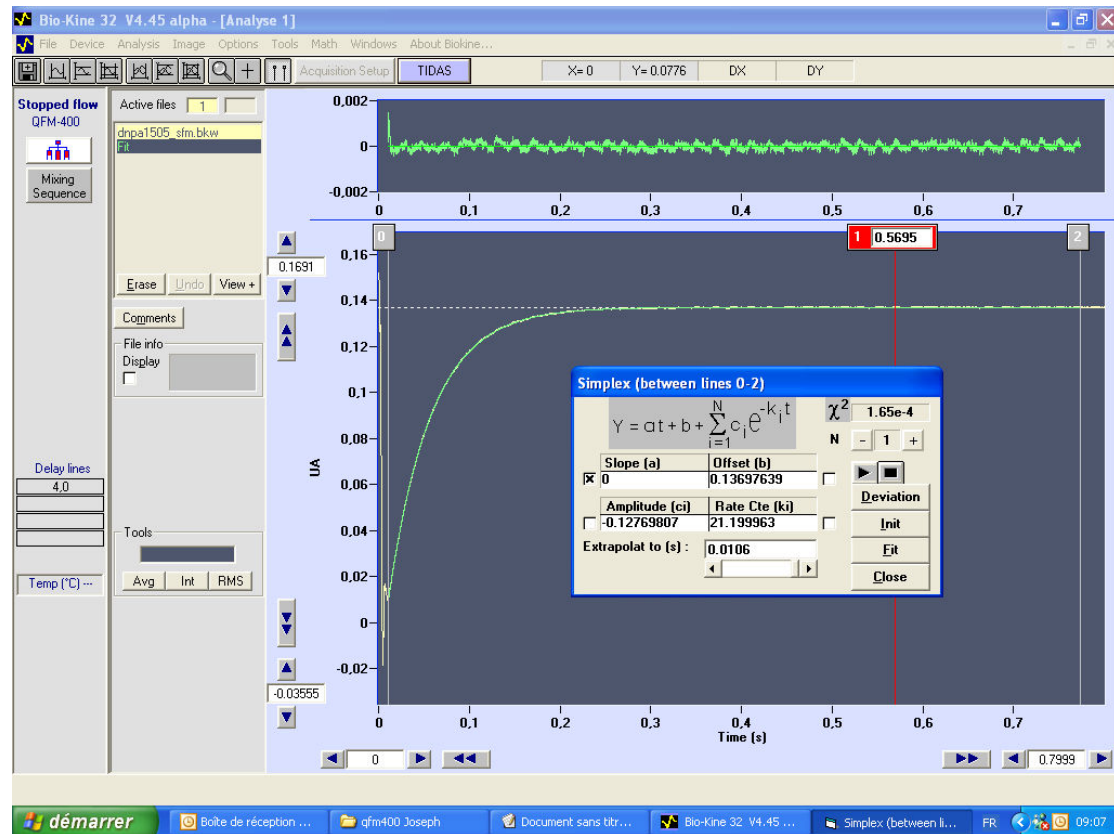


QFM400

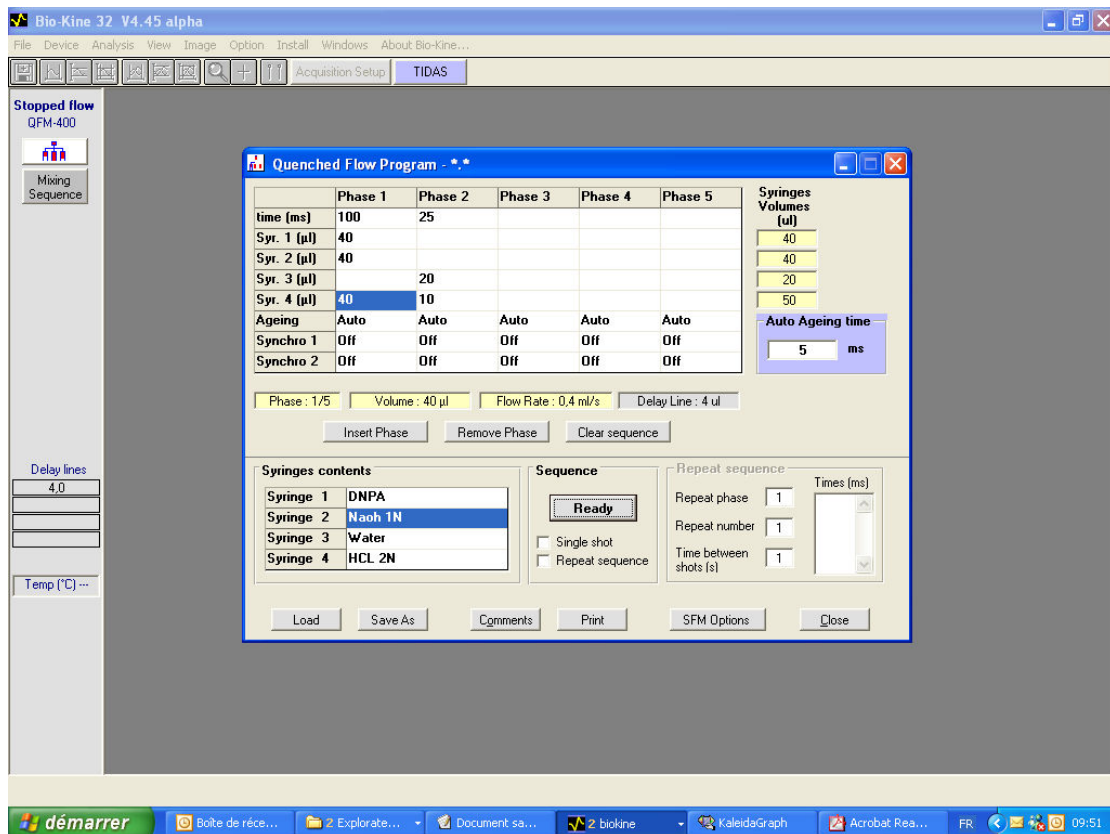
The goal of this experiment was to determinate a sequence allowing to work with low volumes (15µl per shot) with the QFM400.

1/ Firstly, the rate constant of the reaction (DNPA mixed with NaOH 1N) has been measured with an SFM300 + FC08.

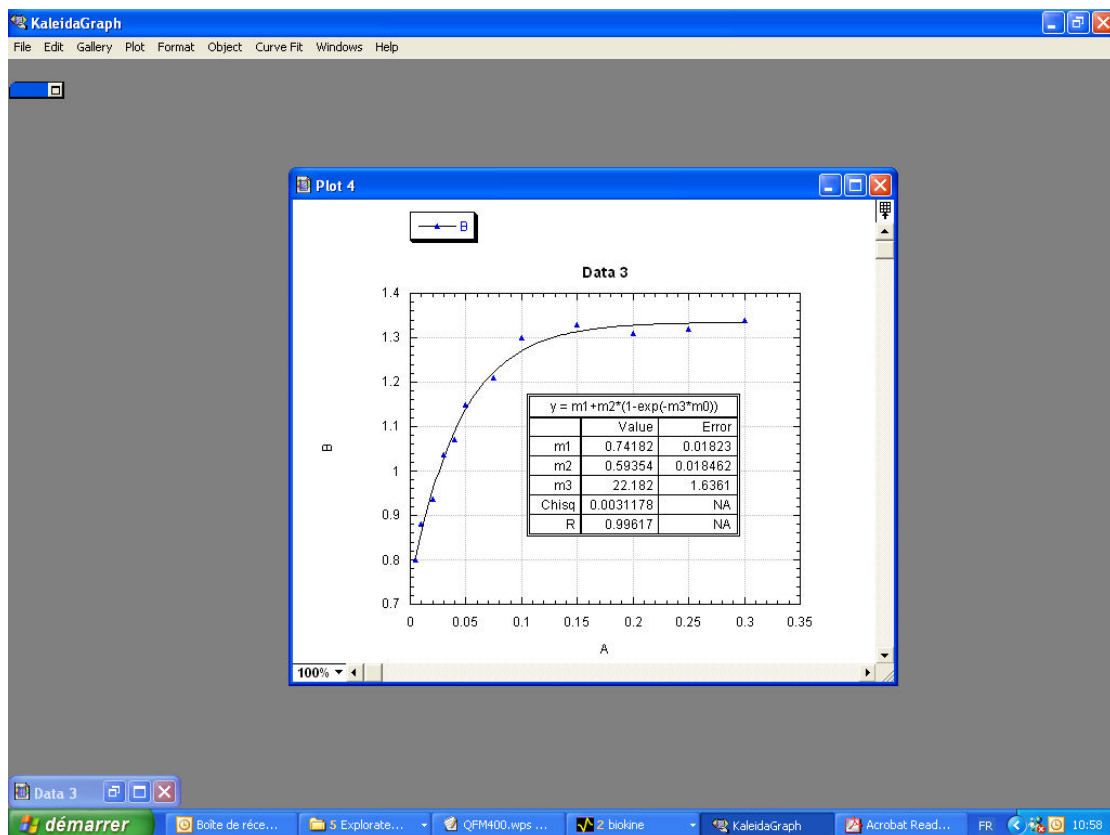
A rate constant of 21.19s⁻¹ has been obtained with the stopped flow (see below).



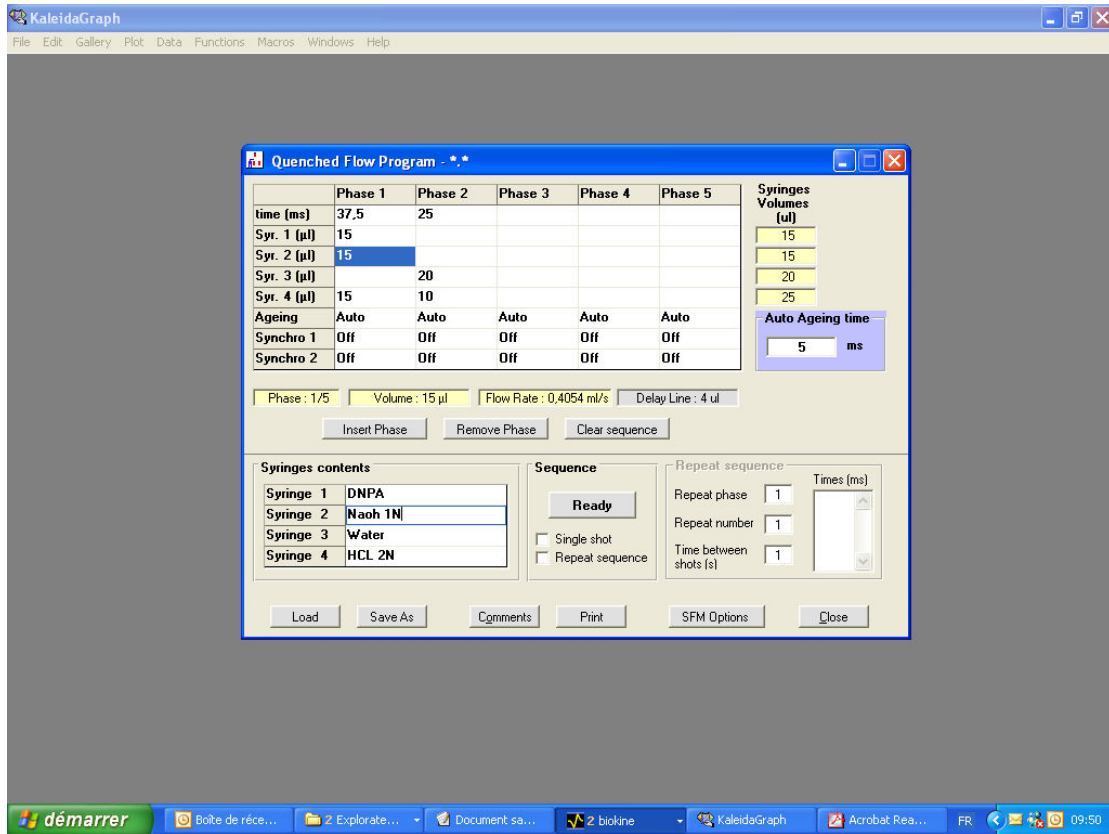
2/ A kinetic has been measured with the QFM 400 running shots of 40µl and followed by a washing phase to flush the delay line.(sequence below).



A rate constant of 22.1s⁻¹ has been obtained with this sequence (see below)



3/ The same experiment has been done two times using 15µl per shot. (sequence below).



The rate constants of 20.5s⁻¹ and 21.5s⁻¹ have been obtained with these sequences. (see below).

